

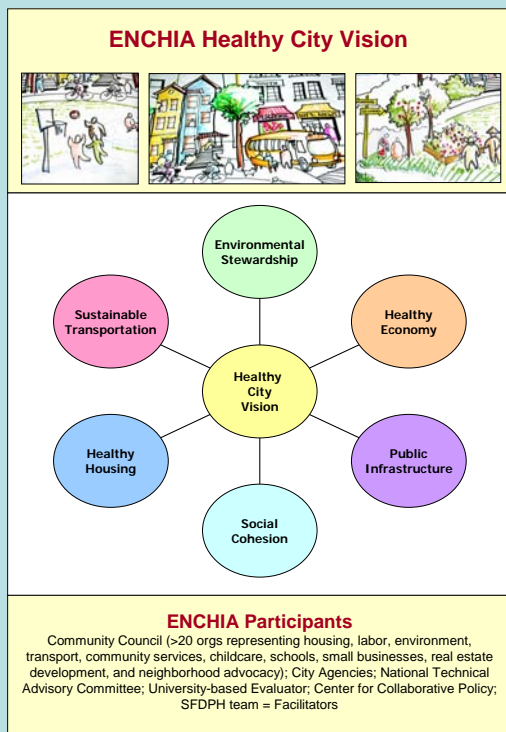
# Eastern Neighborhoods Community Health Impact Assessment (ENCHIA)

Rajiv Bhatia, MD, MPH, Lili Farhang MPH, Megan Gaydos MPH, Shireen Malefkazali MPH, Jennifer McLaughlin MS, Cyndy Scully MS, Megan Wier MPH

Environmental and Occupational Health Section, San Francisco Department of Public Health, San Francisco CA, USA

## Drivers for SFDPH Involvement in Healthy City Planning (1999-2004)

Community Activism	Environmental Health Impacts	Legitimizing Public Health Models
<ul style="list-style-type: none"> <li>EJ organizing around power plant closure &amp; Superfund site cleanup</li> <li>Dot-com boom increased gentrification, displacement &amp; land use conflict</li> <li>Community organizing around displacement and transportation justice</li> <li>Neighborhood groups demanding increased tenant protections</li> </ul>	<ul style="list-style-type: none"> <li>Substandard housing → increases risk of injury, lead poisoning, and overcrowding</li> <li>Noise and air quality issues → increases asthma, cardiovascular disease, and affects sleep</li> <li>Poor community design → lack of physical activity, increased diabetes, and pedestrian injury</li> <li>Reduction in blue-collar jobs → alcoholism, depression, heart disease, and suicide</li> </ul>	<ul style="list-style-type: none"> <li>Analyzed health impacts of local living wage ordinance</li> <li>Cross sector alliance on food systems &amp; transportation</li> <li>Participatory research in environmental justice issues</li> <li>Social determinants to health &amp; health equity frameworks</li> </ul>



### ENCHIA (2004-2007)

An 18-month long collaborative, multi-stakeholder, consensus-based approach to analyze how development in three San Francisco, CA neighborhoods affects community and individual health.

### ENCHIA Process and Products

HIA Stage	Products
<b>SCREENING</b>	Planning Department rezoning San Francisco's Eastern Neighborhoods; community members concerned that health, social, and equity impacts would not be considered through the traditional environmental review process.
<b>SCOPING</b>	In collaboration with the Planning Department, SFDPH convenes a community council to conduct an HIA and creates: <ul style="list-style-type: none"> <li>Healthy City Vision</li> <li>Community Health Objectives (27 Total)</li> </ul>
<b>ASSESSMENT</b>	<ul style="list-style-type: none"> <li>Healthy Development Measurement Tool (HDMT) creation and applied analysis to Eastern Neighborhoods Plans:</li> <li>Existing Conditions Analysis: 100+ Community Health Indicators</li> <li>Impacts Analysis: Evaluated with HDMT Development Checklist</li> <li>Recommendations: informed by HDMT Policy &amp; Design Strategies, Health-based Rationale/Evidence</li> <li>Environmental Health Impact Analysis of Air Pollution, Noise &amp; Pedestrian Hazards</li> </ul>
<b>REPORTING</b>	<ul style="list-style-type: none"> <li>Editing of Eastern Neighborhoods (EN) Area Plans</li> <li>HDMT Evaluation Report on Eastern Neighborhoods Plans</li> <li>SFDPH Analysis included in EN Environmental Impact Report</li> <li>Meetings with ENCHIA Stakeholders &amp; Planning Department</li> <li>Presentations to city, state &amp; national stakeholders</li> <li>Publication of findings in a peer-reviewed journal</li> </ul>
<b>MONITORING</b>	<ul style="list-style-type: none"> <li>Annual Updates of HDMT Indicators facilitates monitoring</li> <li>Participating in Transportation Planning Advisory Group</li> <li>Reviewing Implementation Plans</li> </ul>



## Institutionalization of Healthy City Planning in San Francisco (2004-present)

San Francisco Planning Processes & Projects: Staff Engagement	Interdisciplinary Collaborations: Ongoing	Health Impact Assessment & Planning Tools: Development and Application	Products: New Regulations, Resolutions and Policy and Planning Documents
<ul style="list-style-type: none"> <li>Treasure Island Community Transportation Planning</li> <li>Western SoMa Citizens Planning Task Force</li> <li>HIA of Freeway Channels in Southeastern San Francisco (<i>retrospective</i>)</li> <li>City Open Space Task Force</li> <li>Congestion Pricing HIA</li> <li>HDMT Evaluation of HOPE SF Public Housing</li> <li>Departmental Climate Planning</li> <li>SFDPH Noise Task Force</li> <li>Park Renovation and Health: Technical assistance and research in under-served communities</li> <li>Cruise Terminal Environmental Advisory Committee</li> </ul>	<p><b>Government Agencies (Local, Regional):</b></p> <ul style="list-style-type: none"> <li>City Planning Department &amp; Transportation Agencies</li> <li>Mayor's Office</li> <li>Regional Air District</li> <li>Redevelopment Agency</li> <li>Public Utilities Commission</li> </ul> <p><b>Community Stakeholders, NGOs representing:</b></p> <ul style="list-style-type: none"> <li>Sustainable Transportation (walking, biking, transit)</li> <li>Parks and Open Space</li> <li>Affordable Housing</li> <li>Healthy Jobs for Low-Income, Immigrant Workers</li> <li>Environmental Justice</li> </ul> <p><b>Co-founded California Healthy Places Coalition &amp; Conduct Annual Health Impact Assessment Training</b></p>	<p><b>Tools include:</b></p> <ul style="list-style-type: none"> <li>Healthy Development Measurement Tool (HDMT)</li> <li>Air Quality Measurement and Modeling</li> <li>San Francisco Noise Model</li> <li>Pedestrian Environmental Quality Index</li> <li>Vehicle-Pedestrian Injury Collision Model</li> <li>Bicycle Environmental Quality Index</li> <li>Retail Food Availability Survey</li> <li>Neighborhood Completeness Indicator</li> <li>Pedestrian Flow Model</li> </ul> <p><b>Staff Development/Institutionalization:</b></p> <ul style="list-style-type: none"> <li>Creation of Program on Health, Equity and Sustainability's <b>Urban Health and Place Team</b> that develops and applies the above tools</li> </ul>	<ul style="list-style-type: none"> <li>Local ordinance requiring the analysis and mitigation of traffic-related air pollution impacts on new residential development (Article 38, San Francisco Health Code)</li> <li>Modernization of City noise standards and enforcement rules</li> <li>Board of Supervisors Resolution urging SFDPH to work with local transportation agencies to address adverse health impacts of traffic, including trucks, on local residents</li> <li>Regular review of health impacts in environmental review process (e.g., air quality, noise)</li> <li>Treasure Island Community-based Transportation Plan</li> <li>Participation in greywater installation and rainwater harvesting policy development processes</li> </ul>