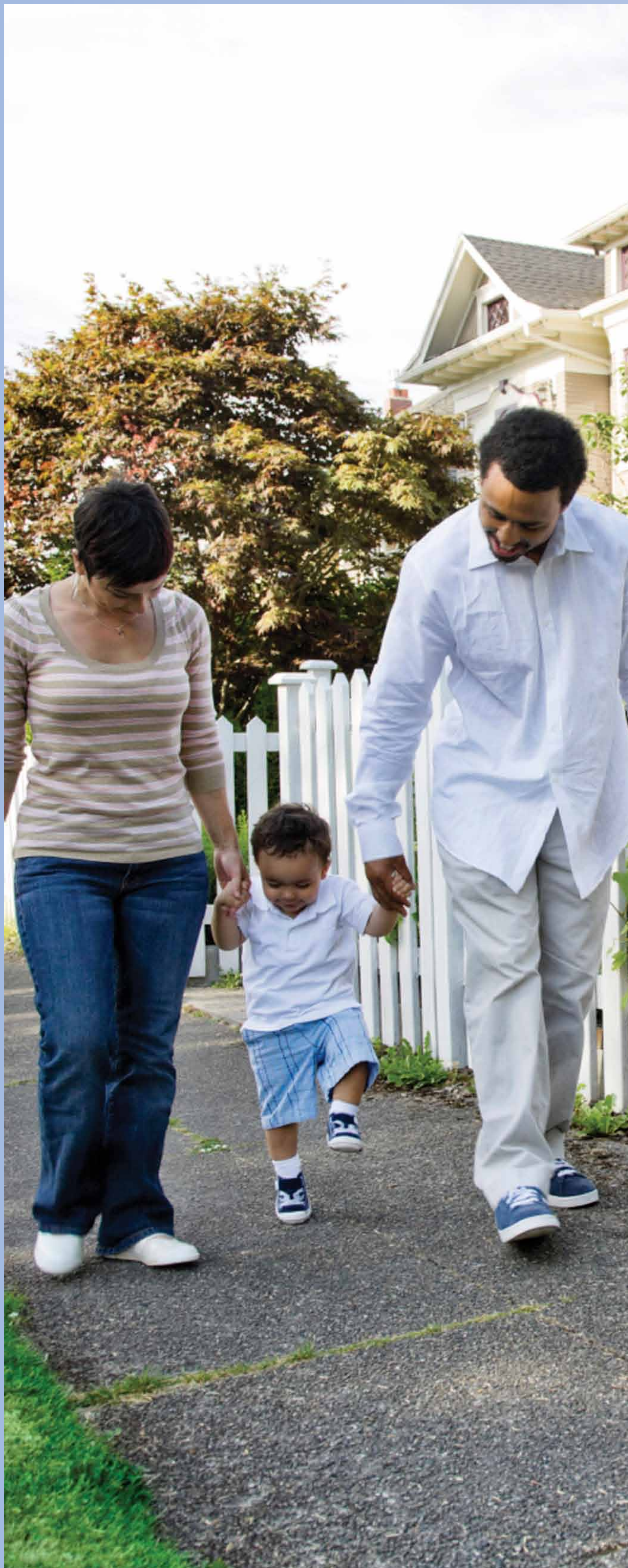


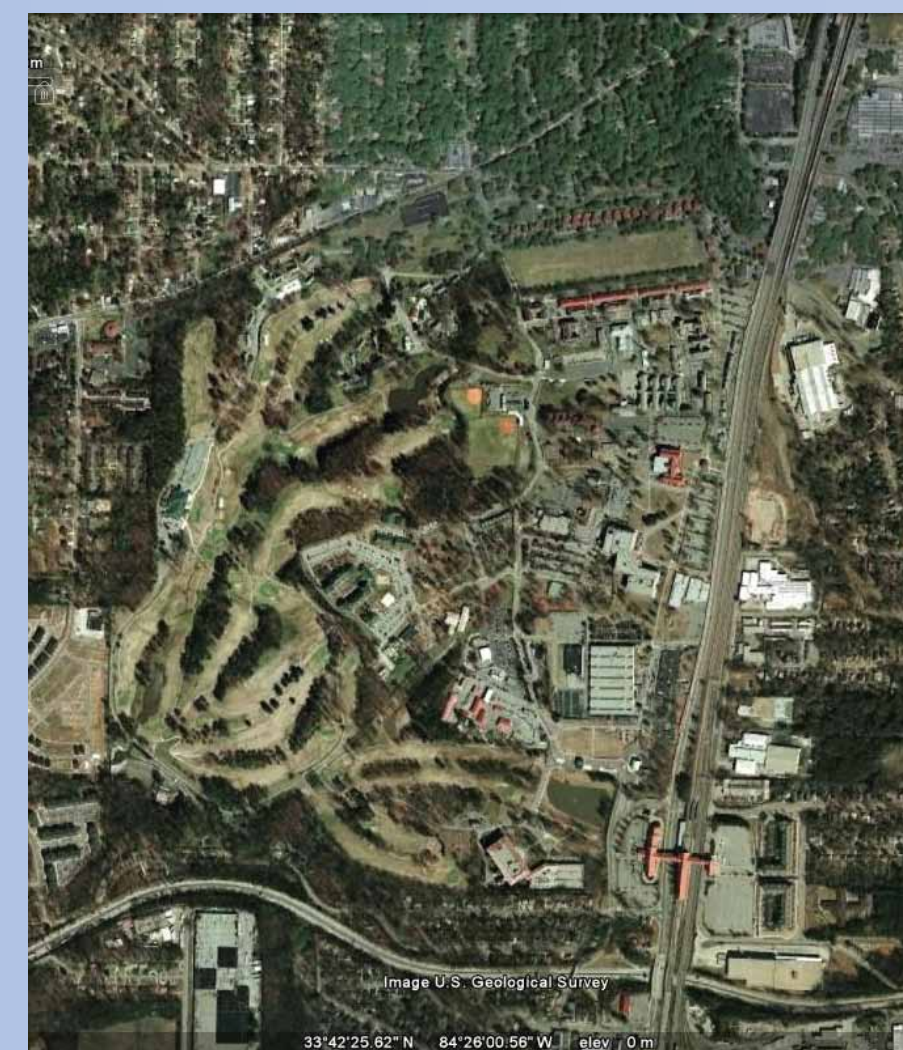
# USING HIA TO PROMOTE HEALTH IN ALL POLICIES: An Exploration Through the Base Realignment and Closure Process

Holly Avey, Ph.D., M.P.H. and Jane Branscomb, B.E.



## DEVELOPING FORT MCPHERSON AS A HEALTHIER PLACE: A HEALTH IN ALL POLICIES APPROACH

Fort McPherson is an Army installation in Georgia that is slated to close in 2011 as part of the Department of Defense's Base Realignment and Closure (BRAC) program. The vacated military property offers Metro Atlanta its largest single redevelopment opportunity in many years, with profound economic and health implications for new residents, neighboring communities and the region. The Georgia Health Policy Center and Centers for Disease Control and Prevention (CDC) are collaborating with the McPherson Local Redevelopment Authority (LRA) and other stakeholders to bring a "Health in All Policies" (HiAP) perspective to BRAC redevelopment activities at Fort McPherson. The objective is to use Fort McPherson as a case study while working with national, state and local stakeholders to operationalize the concept of Health in All Policies, ultimately creating a framework for incorporating health into future base closures and other large-scale redevelopments.



- 488 acres within City of Atlanta, restricted access
- Served by two public transit rail stations
- Existing structures include a bank, convenience store, variety of housing, recreation facilities, health services facilities, and offices
- Historic parade ground and buildings from late 19th century on National Register

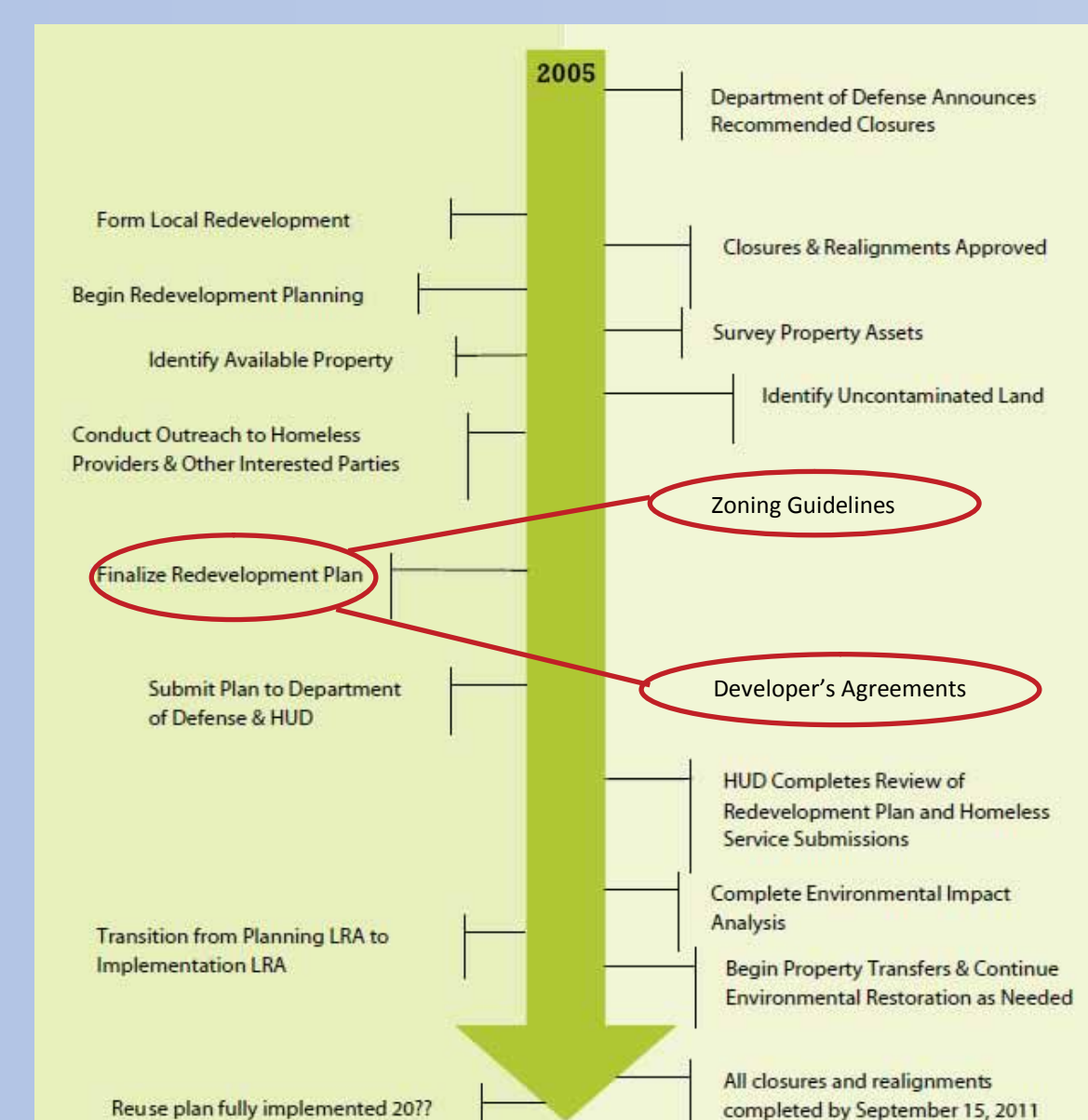


- 200+ acres dedicated recreation space (mostly golf course)
- Two creeks, piped where they cross the property, have caused nearby flooding
- Army to vacate by September 2011
- Development may take 10+ years to complete

## BASE REALIGNMENT AND CLOSURE PROCESS

Base closure is a complex and highly prescribed process that takes years to complete. Redevelopment may span decades, yet there are a limited number of opportunities to interject a Health in All Policies approach. These include the design guidelines, zoning stipulations and the developer's agreement.

## DECISION POINTS IN THE BRAC PROCESS



(Adapted from Base Building, by The Partnership for Working Families)

## WHAT IS HEALTH IN ALL POLICIES?

"Health in All Policies" (HiAP) is a sweeping goal that aims to help decision-makers understand the links between policies and interventions, health determinants and the resulting health outcomes in a wide range of focus areas (American Public Health Association).

## WHAT IS A HEALTH IMPACT ASSESSMENT?

Health Impact Assessment (HIA), defined as "a combination of procedures, methods and tools that systematically judges the potential, and sometimes unintended, effects of a policy, plan, programme or project on the health of a population and the distribution of those effects within the population," is a methodology and decision making support tool that fulfils this aim (Metcalfe and Higgins, 2009).

## FORT MCPHERSON INTERIM USE RAPID HIA

A decision was made to conduct a rapid HIA as a means of operationalizing the concept of Health in All Policies and to give community stakeholders a more tangible means of engagement for the Fort McPherson HiAP project. It was determined that the interim use of the property during the potentially extensive transition from Army to Local Redevelopment Authority to private developers could have a crucial impact on the surrounding community's health, so the HIA was designed to inform the interim use potential within the zoning guidelines.

## SCREENING

- Potential areas of health impact on surrounding residents during phase-in include recreation, policing, housing, hiring, and traffic
- The LRA has expressed interest in hearing recommendation from an HIA
- Desired outcome of HIA is to make health-promoting policies for interim use explicit

## SCOPING

- Research Question: "How will the community's health be impacted during phase-in by potential decisions and rules regarding interim use?"
- Checklist tool used with stakeholders to review and prioritize topics

## ASSESSMENT

- Will use available knowledge and existing data

## REPORTING

- Data sources will be shared with community members per request
- Results will be presented to all stakeholders in a community meeting
- Final recommendations will be shared with all stakeholders by end of April

## HIA EVALUATION

- To what extent has the process engaged and heard all of the appropriate voices?
- To what degree has the process been useful for the community?
- To what degree have the results been embraced and formalized by decision-makers?

HiAP	HIA	Stakeholders & Collaborators	Level	Role
■	■	DoD	Federal	BRAC
■	■	Army		Agency perspectives on HiAP
■	■	EPD		
■	■	HUD	State/Local	Decision-makers
■	■	CDC		
■	■	Planning LRA	Local	Interested parties affected by outcome
■	■	Implementation LRA		
■	■	Developers		
■	■	Mayor		
■	■	City Council		
	■	Community coalitions		
	■	Community members		

## HOW DO HEALTH IMPACT ASSESSMENT AND HEALTH IN ALL POLICIES INTERSECT FOR THIS PROJECT?

### PROJECT GOALS

	HEALTH IN ALL POLICIES	HEALTH IMPACT ASSESSMENT
FT MCPHERSON REDEVELOPMENT	To foster a Health in All Policies strategic mindset among all stakeholders in the Fort McPherson redevelopment, so that health interests are considered at all stages	To promote rules and decisions for interim use of the Fort McPherson property that serve the broad health interests of those both on and surrounding the base during the transition
REMAINING BRACS	To translate learnings from the Fort McPherson project into guidelines for infusing all BRAC processes with HiAP	To produce process recommendations, statements of intent or other tools that can be used to assure health-promoting interim use in other BRAC redevelopments

## CONCLUSION

The rapid HIA currently underway at Fort McPherson will produce data on the health impact of interim uses which can inform zoning decisions. This HIA is situated in the larger context of a Health in All Policies perspective on the redevelopment of the Army base, which will inform a HiAP framework for the overall BRAC process. Many opportunities still exist to further clarify the explicit relationship between HIA and HiAP, to explore the underlying motivations of health and equity for each, and how each may be used separately or in combination to achieve these underlying objectives.

## REFERENCES

- Metcalfe O, Higgins C. Health Impact Assessment contributing to Healthy Public Policy. Public Health. Apr 2009;123(4):295.
- American Public Health Association. Health Impact Assessment (HIA): A Tool to Benefit Health in all Policies. Washington, DC: American Public Health Association; n.d.

For more information, please contact the Georgia Health Policy Center at 404.413.0314 or visit us online at [www.gsu.edu/ghpc](http://www.gsu.edu/ghpc).